



Deer Season

[Hunting](#) > [Seasons and Bag Limits](#) > [Deer Season](#)

Deer Season 2025-2026

ANTLERED BUCKS are defined as those male deer with one or more antlers visible above the natural hairline.

UNANTLERED DEER are defined as all deer without one or more antlers visible above the natural hairline

White-Tailed Antlered Buck Limit

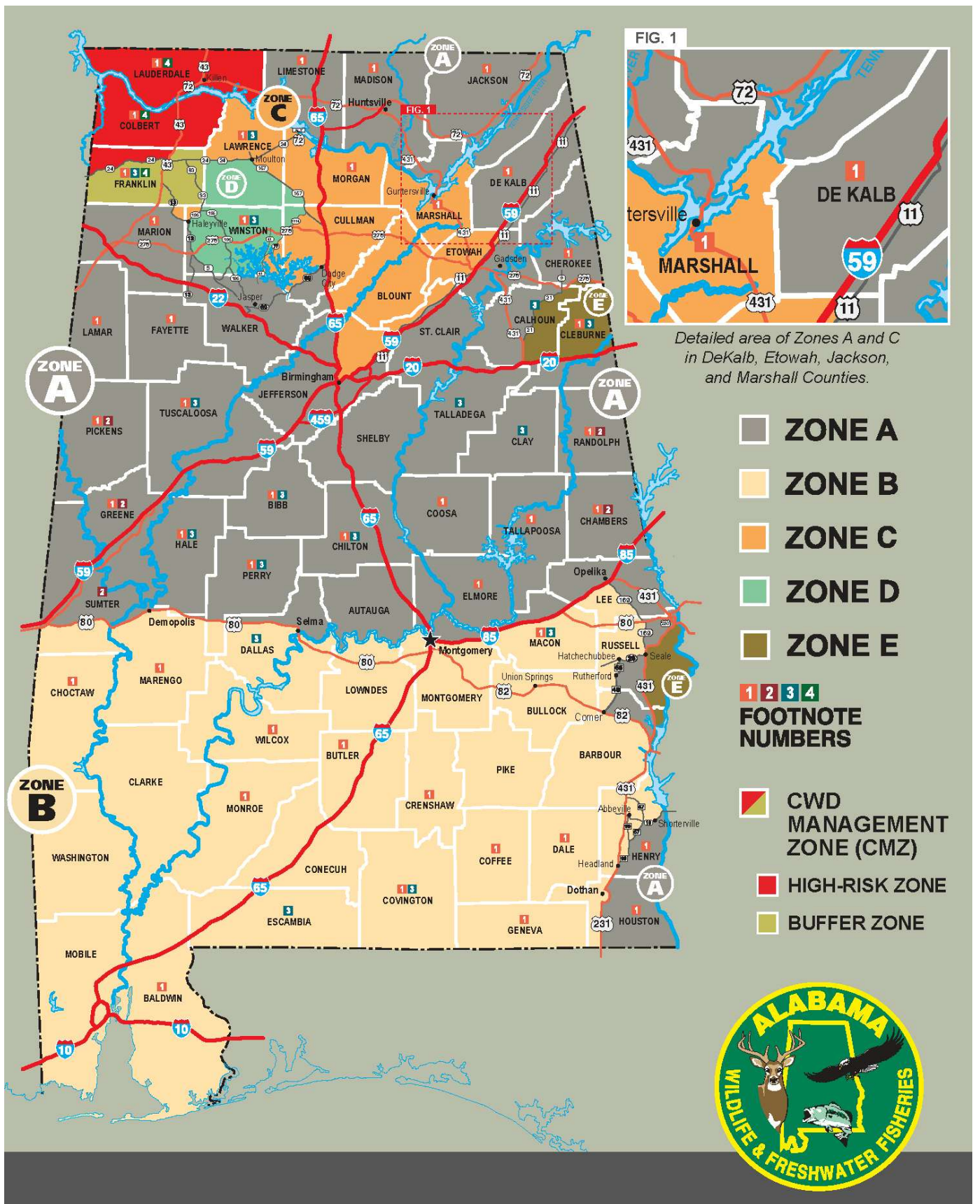
- Three per hunter during all combined seasons, one per day. One of the three must have at least 4 antler points 1 inch or longer on one antler (except for Barbour County). A point is defined as an antler projection of at least one inch in length from base to tip. The main beam tip shall be counted as a point regardless of length.

EXCEPTIONS: 1.) **BARBOUR COUNTY ANTLER RESTRICTION** – white-tailed deer antlered bucks must have a minimum of three points on one side, (except on the statewide special youth deer hunting dates during which any antlered buck may be taken). 2.)

WILDLIFE MANAGEMENT AREA (WMA) BONUS BUCK – *One per hunter during all combined bonus buck hunt dates will be allowed to be harvested from a selected collection of WMA's on specific hunt dates depicted on the WMA map permits that will not count towards the hunter's State three buck limit. Must be validated at the WMA check station by WFF personnel.*

White-Tailed Unantlered Deer Limit

- During the Unantlered Deer Gun, Special Muzzleloader, Bow and Arrow and Special Youth (under 16) Seasons, in Zones A, B, D, E & CMZ two unantlered deer or one unantlered deer and one antlered buck may be taken per day. In Zone C one unantlered deer and one antlered buck may be taken per day. See Special Exceptions below for selected areas.



2025-2026 Deer Zone Map

ZONE A

ARCHERY – STALK HUNTING:

- October 15, 2025 – February 10, 2026 - *Either Sex*
-

SPECIAL YOUTH GUN

- November 14-17, 2025 - *Either Sex*
-

SPECIAL MUZZLELOADER AND AIR RIFLE:

Privately Owned or Leased Land and Open Permit Public Lands (*Stalk Hunting Only*)

- November 17-21, 2025 - *Either Sex*
-

GUN DEER-STALK HUNTING:

ON PRIVATELY OWNED OR LEASED LAND ONLY

- November 22, 2025 – February 10, 2026 - *Either Sex*

ON OPEN PERMIT-PUBLIC LAND

- November 22, 2025 – December 12, 2025 - *Antlered Bucks Only*
 - December 13, 2025 – January 4, 2026 - *Either Sex*
 - January 5 – February 10, 2026 - *Antlered Bucks Only*
-

GUN DEER-DOG DEER HUNTING: *WHERE ALLOWED*

ON PRIVATELY OWNED OR LEASED LAND ONLY

- November 22, 2025 – January 15, 2026 - *Either Sex*

ON OPEN PERMIT-PUBLIC LANDS: *WHERE ALLOWED*

- November 22 – December 12, 2025 - *Antlered Bucks Only*
 - December 13, 2025 – January 4, 2026 - *Either Sex*
 - January 5-15, 2026 - *Antlered Bucks Only*
-

ZONE A (see map): Those areas with the following boundaries: beginning at the intersection of the Alabama/Mississippi state line and US Hwy. 80 (Sumter County), east along US Hwy. 80 to the US Hwy. 80 Bypass in Selma (Dallas County); east along US Hwy 80 Bypass to the Alabama River; east along the Alabama River to I-65; south along I-65 to the intersection with I-85; north along I-85 to AL Hwy. 169 (Exit 60 – Lee County); south along AL Hwy. 169 to AL Hwy. 1/US Hwy. 431; south along AL Hwy. 1/US Hwy. 431 to AL Hwy. 26; west along AL Hwy. 26 to Russell County Road 65; south along Russell County Road 65 to Russell County Road 4; west along Russell County Road 4 to Russell County Road 49; south along Russell County Road 49 to US Hwy. 82; east along US Hwy. 82 to the Chattahoochee River; south along the Chattahoochee River to AL Hwy. 10; west along AL Hwy. 10 to Henry County Road 57; south along Henry County Road 57 to Henry County Road 99; south along Henry County Road 99 to US Hwy. 431; south along US Hwy. 431 to Ross Clark Circle (bypass around Dothan); east along Ross Clark Circle to US Hwy. 231; south along US Hwy. 231 to the Alabama/Florida state line; east along the Alabama/ Florida state line to the Chattahoochee River; north along the Chattahoochee River to US Hwy. 82; west along US Hwy. 82 to US Hwy. 431; north along US Hwy. 431 to US Hwy. 280; east along US Hwy. 280 to Alabama/ Georgia state line; north along Alabama/ Georgia state line to I-20; west along I-20 to AL Hwy. 21; north along AL Hwy. 21 to US Hwy. 278; east along US Hwy 278 to the Alabama/ Georgia state line; north along the Alabama/ Georgia state line to the Alabama/Tennessee state line; west along the Alabama/Tennessee state line to the Lauderdale County/Limestone County line; south along the Lauderdale County/Limestone County line to the Tennessee River; west along the Tennessee River to the Colbert County/ Lawrence County line; south along the Colbert County/ Lawrence County line to the Colbert County/ Franklin County line; south along the Franklin County/Lawrence County line to the Winston County line; west along the Franklin County/Winston County line continuing along the Franklin County/Marion County line to the Alabama/Mississippi state line; south along the

Alabama/Mississippi state line ending at US Hwy. 80 (Sumter County). **Excludes Zones C, D, and E descriptions below.**

ZONE B

ARCHERY – STALK HUNTING:

- October 15-24, 2025 - *Antlered Bucks Only*
 - October 25, 2025 – February 10, 2026 - *Either Sex*
-

SPECIAL YOUTH GUN

- November 14-17, 2025 - *Either Sex*
-

SPECIAL MUZZLELOADER AND AIR RIFLE:

Privately Owned or Leased Land and Open Permit Public Lands (*Stalk Hunting Only*)

- November 17-21, 2025 - *Either Sex*
-

GUN DEER-STALK HUNTING:

ON PRIVATELY OWNED OR LEASED LAND ONLY

- November 22, 2025 – February 10, 2026 - *Either Sex*

ON OPEN PERMIT-PUBLIC LAND

- November 22 – December 12, 2025 - *Antlered Bucks Only*
 - December 13, 2025 – January 4, 2026 - *Either Sex*
 - January 5 – February 10, 2026 - *Antlered Bucks Only*
-

GUN DEER-DOG DEER HUNTING: *WHERE ALLOWED*

ON PRIVATELY OWNED OR LEASED LAND ONLY

- November 22, 2025 – January 15, 2026 - *Either Sex*

ON OPEN PERMIT-PUBLIC LANDS: WHERE ALLOWED

- November 22 – December 12, 2025 - *Antlered Bucks Only*
 - December 13, 2025 – January 4, 2026 - *Either Sex*
 - January 5-15, 2026 - *Antlered Bucks Only*
-

ZONE B (see map): Those areas south or west of a line described as: beginning at the intersection of the Mississippi state line and US Hwy. 80 (Sumter County), east along US Hwy. 80 to the US Hwy. 80 Bypass in Selma (Dallas County); east along US Hwy. 80 Bypass to the Alabama River; east along the Alabama River to I-65; south along I-65 to the intersection with I-85; north along I-85 to AL Hwy. 169 (Exit 60 – Lee County); south along AL Hwy. 169 to AL Hwy. 1/US Hwy. 431; south along AL Hwy. 1/ US Hwy. 431 to AL Hwy. 26; west along AL Hwy. 26 to Russell County Road 65; south along Russell County Road 65 to Russell County Road 4; west along Russell County Road 4 to Russell County Road 49; south along Russell County Road 49 to US Hwy. 82; east along US Hwy. 82 to US Hwy. 431; south along US Hwy. 431 to US Hwy. 82; east along US Hwy. 82 to the Chattahoochee River; south along the Chattahoochee River to AL Hwy. 10; west along AL Hwy. 10 to Henry County Road 57; south along Henry County Road 57 to Henry County Road 99; south along Henry County Road 99 to US Hwy. 431; south along US Hwy. 431 to Ross Clark Circle (bypass around Dothan); east along Ross Clark Circle to US Hwy. 231; south along US Hwy. 231 to the Alabama/Florida state line; west along the Alabama/Florida state line to the Alabama/Mississippi state line, north along the Alabama/Mississippi state line ending at US Hwy. 80 (Sumter County).

ZONE C

ARCHERY – STALK HUNTING

- October 15, 2025 – February 10, 2026 - *Either Sex*
-

SPECIAL YOUTH GUN

- November 14-17, 2025 - *Either Sex*
-

SPECIAL MUZZLELOADER AND AIR RIFLE

Privately Owned or Leased Land and Open Permit Public Lands (*Stalk Hunting Only*)

- November 17-21, 2025 - *Either Sex*
-

GUN DEER-STALK HUNTING:

ON PRIVATELY OWNED OR LEASED LAND ONLY

- November 22-30, 2025 - *Either Sex*
- December 1-12, 2025 - *Antlered Bucks Only*
- December 13, 2025 – January 1, 2026 - *Either Sex*
- January 2 – February 10, 2026 - *Antlered Bucks Only*

ON OPEN PERMIT-PUBLIC LAND

- November 22 – December 12, 2025 - *Antlered Bucks Only*
 - December 13, 2025 – January 1, 2026 - *Either Sex*
 - January 2 – February 10, 2026 - *Antlered Bucks Only*
-

GUN DEER-DOG DEER HUNTING: WHERE ALLOWED

ON PRIVATELY OWNED OR LEASED LAND ONLY

- November 22-30, 2025 - *Either Sex*
- December 1-12, 2025 - *Antlered Bucks Only*
- December 13, 2025 – January 1, 2026 - *Either Sex*
- January 2-15, 2025 - *Antlered Bucks Only*

ON OPEN PERMIT-PUBLIC LANDS: WHERE ALLOWED

- November 22 – December 10, 2025 - *Antlered Bucks Only*

- December 13, 2025 – January 1, 2026 - *Either Sex*
 - January 2-15, 2026 - *Antlered Bucks Only*
-

ZONE C (see map): Those areas of Blount, Cullman, Etowah, Jefferson, Lawrence, Marion, Morgan, Marshall, St. Clair, Walker, and Winston Counties with the following boundaries: beginning at the Franklin County/Marion County line on AL Hwy. 13 south along AL Hwy. 13 to AL Hwy. 195 in Haleyville (Winston County); north along AL Hwy. 195 to Winston County Road 93; north along Winston County Road 93 to the Franklin County/Winston County; east along the Franklin County/Winston County line to the Lawrence County/Winston County line; north along the Franklin County/Lawrence County line to AL Hwy. 24; east along Alabama Hwy. 24 to intersection with AL Hwy. 157 in Moulton (Lawrence County); south along AL Hwy. 157 to Cullman County Road 1114; south along Cullman County Road 1114 to US Hwy. 278 in Jones Chapel (Cullman County); west along US Hwy. 278 to Helicon Road (Winston County Road 77); south along Helicon Road (Winston County Road 77) to Winston County Road 41 in Arley (Winston County); south along Winston County Road 41 to the Sipsey Fork; south along the Sipsey Fork to US Hwy. 69; north along US Hwy. 69 to I-65; south along I-65 to I-59; north along I-59 to US Hwy. 11; north along US Hwy. 11 to Etowah County/Dekalb County line; west along Etowah County/Dekalb County line to Dekalb County/Marshall County line; north along Dekalb County/Marshall County line to Marshall County/Jackson County line, north along Marshall County/Jackson County line to Tennessee River; west along Tennessee River to the Colbert County/Lawrence County line; south along the Colbert County/Lawrence County line to the Franklin County/Lawrence County line; south along the Franklin County/Lawrence County line to the Winston County/Franklin County line; west along the Winston County/Franklin County line continuing west along the Franklin County/Marion County line ending at AL Hwy. 13. **Excludes Zone D description below.**

ZONE D

ARCHERY – STALK HUNTING

- October 1, 2025 – January 15, 2026 - *Either Sex*
 - January 16-27, 2026 - *Antlered Bucks Only*
-

SPECIAL YOUTH GUN

- October 31– November 3, 2025 - *Either Sex*
-

SPECIAL MUZZLELOADER AND AIR RIFLE

Privately Owned or Leased Land and Open Permit Public Lands (*Stalk Hunting Only*)

- November 3-7, 2025 - *Either Sex*
-

GUN DEER-STALK HUNTING:

ON PRIVATELY OWNED OR LEASED LAND ONLY

- November 8-21, 2025 - *Antlered Bucks Only*
- November 22-30, 2025 - *Either Sex*
- December 1-12, 2025 - *Antlered Bucks Only*
- December 13, 2025 - January 1, 2026 - *Either Sex*
- January 2-27, 2026 - *Antlered Bucks Only*

ON OPEN PERMIT-PUBLIC LAND

- November 8 – December 12, 2025 - *Antlered Bucks Only*
 - December 13, 2025 – January 1, 2026 - *Either Sex*
 - January 2-27, 2026 - *Antlered Bucks Only*
-

GUN DEER-DOG DEER HUNTING: WHERE ALLOWED

ON PRIVATELY OWNED OR LEASED LAND ONLY

- November 8-21, 2025 - *Antlered Bucks Only*
- November 22-30, 2025 - *Either Sex*

- December 1-12, 2025 - *Antlered Bucks Only*
- December 13, 2025 – January 1, 2026 - *Either Sex*

ON OPEN PERMIT-PUBLIC LAND: WHERE ALLOWED

- November 8 – December 12, 2025 - *Antlered Bucks Only*
 - December 13, 2025 – January 1, 2026 - *Either Sex*
-

ZONE D (see map): Those areas of Cullman, Lawrence, Morgan and Winston Counties with the following boundaries: beginning at the intersection of AL Hwy. 157 and AL Hwy. 24 in Moulton (Lawrence County); south along AL Hwy. 157 to Cullman County Road 1114; south along Cullman County Road 1114 to US Hwy. 278 in Jones Chapel (Cullman County); west along US Hwy. 278 to Helicon Road (Winston County Road 77); west along Helicon Road (Winston County Road 77) to Winston County Road 41 in Arley (Winston County); south along Winston County Road 41 to the Sipsey Fork; south along the Sipsey Fork to the Winston County/Walker County line; west along the Winston County/Walker County line to AL Hwy. 5; north along AL Hwy. 5 to AL Hwy. 13 at Natural Bridge (Winston County); north along AL Hwy. 13 to AL Hwy. 195 in Haleyville (Winston County); north along AL Hwy. 195 to Winston County Road 93; north along Winston County Road 93 to the Franklin County line; east along the Franklin County/Winston County line to the Lawrence County line; North on the Lawrence County/Franklin County line to AL Hwy. 24; east along AL Hwy. 24 ending at intersection with AL Hwy. 157 in Moulton (Lawrence County).

ZONE E

ARCHERY – STALK HUNTING

- October 1, 2025 – January 15, 2026 - *Either Sex*
 - January 16-27, 2026 - *Antlered Bucks Only*
-

SPECIAL YOUTH GUN

- October 31 – November 3, 2025 - *Either Sex*

SPECIAL MUZZLELOADER AND AIR RIFLE

Privately Owned or Leased Land and Open Permit Public Lands (*Stalk Hunting Only*)

- November 3-7, 2025 - *Either Sex*
-

GUN DEER-STALK HUNTING:

ON PRIVATELY OWNED OR LEASED LAND ONLY

- November 8, 2025 – January 15, 2026 - *Either Sex*
- January 16-27, 2026 - *Antlered Bucks Only*

ON OPEN PERMIT-PUBLIC LAND

- November 8 – December 12, 2025 - *Antlered Bucks Only*
 - December 13, 2025 – January 1, 2026 - *Either Sex*
 - January 2-27, 2026 - *Antlered Bucks Only*
-

GUN DEER-DOG DEER HUNTING: *WHERE ALLOWED*

ON PRIVATELY OWNED OR LEASED LAND ONLY

- November 8, 2025 – January 1, 2026 - *Either Sex*

ON OPEN PERMIT-PUBLIC LAND: *WHERE ALLOWED*

- November 8 – December 12, 2025 - *Antlered Bucks Only*
 - December 13, 2025 – January 1, 2026 - *Either Sex*
-

ZONE E (see map): Those areas of Barbour and Russell Counties with the following boundaries: beginning at the intersection of US Hwy. 82 and US Hwy. 431 in Eufaula (Barbour County), north along US Hwy. 431 to US Hwy. 280; east along US Hwy. 280 to the Chattahoochee River; south along the Chattahoochee River to US Hwy. 82; west

along US Hwy. 82 ending at intersection with US Hwy. 431 (Barbour County); and those areas of Calhoun, Cherokee, and Cleburne Counties with the following boundaries: beginning at the intersection of I-20 and AL Hwy. 21 (Calhoun County); north along AL Hwy. 21 to AL Hwy. 9 in Piedmont (Calhoun County); north along AL Hwy. 9 to US Hwy. 278; east along US Hwy. 278 to the Alabama/Georgia state line; south along the Alabama/Georgia state line to I-20; west along I-20 ending at intersection with AL Hwy. 21 (Calhoun County).

CHRONIC WASTING DISEASE MANAGEMENT ZONE (CMZ)

ARCHERY – STALK HUNTING

- October 15, 2025 – February 10, 2026 - *Either Sex*
-

SPECIAL YOUTH GUN

- November 14-17, 2025 - *Either Sex*
-

SPECIAL MUZZLELOADER AND AIR RIFLE

Privately Owned or Leased Land and Open Permit Public Lands (*Stalk Hunting Only*)

- November 17-21, 2025 - *Either Sex*
-

GUN DEER-STALK HUNTING:

ON PRIVATELY OWNED OR LEASED LAND ONLY

- November 22, 2025 – February 10, 2026 - *Either Sex*

ON OPEN PERMIT-PUBLIC LAND

- November 22, 2025 – December 12, 2026 - *Antlered Bucks Only*
 - December 13, 2025 – February 10, 2026 - *Either Sex*
-

GUN DEER-DOG DEER HUNTING: *WHERE ALLOWED*

ON PRIVATELY OWNED OR LEASED LAND ONLY

- November 22, 2025 – January 15, 2026 - *Either Sex*

ON OPEN PERMIT-PUBLIC LAND: *WHERE ALLOWED*

- November 22, 2025 – December 12, 2025 - *Antlered Bucks Only*
 - December 13, 2025 – January 15, 2026 - *Either Sex*
-

Chronic Wasting Disease (CWD) Management Zone (see map): The CWD Management Zone (CMZ) includes all of Lauderdale and Colbert Counties and a portion of Franklin County.

(a) Within the CMZ, the High-Risk Zone (HRZ) includes all Lauderdale and Colbert County and the portion of Franklin County with the following boundaries: beginning at the intersection of the Alabama/Mississippi State line and State Hwy. 24; east along State Hwy. 24 to US Hwy. 43; north along US Hwy. 43 to the Franklin County/Colbert County Line.

(b) Within the CMZ, the Buffer Zone (BZ) includes those portions of Franklin County with the following boundaries: beginning at the intersection of the Alabama/Mississippi State line and State Hwy. 24; south along the Alabama/Mississippi State line to the Franklin County/Marion County line; east along the Franklin County/Marion County line to the Franklin County/Winston line; east along the Franklin County/ Winston Line to the Franklin County/Lawrence County line; north along the Franklin County/Lawrence County line to Franklin County/Colbert County line; west along the Franklin County/Colbert County Line to US Hwy. 43; south along US Hwy. 43 to State Hwy. 24; west along State Hwy. 24 ending at the Alabama/Mississippi State line.

[Learn more about CWD in Alabama.](#)

SPECIAL EXCEPTIONS –

Dog Deer Hunting:

1. Dog Deer Hunting Prohibited Except by Special Permit from the Department:

BALDWIN; CHAMBERS; CHOCTAW (that area south of AL Hwy. 10 and west of AL Hwy. 17 and north of County Road 18 from AL Hwy. 17 to County Road 14 then north of County Road 14 to the Mississippi state line); **COLBERT** (that area west of US Hwy. 43); **COOSA; COVINGTON** (north of US Hwy. 84); **ELMORE** (that area inside the following boundaries: from the Coosa County/Elmore County line at the east bank of Lake Jordan, to AL Hwy. 9, south along AL Hwy. 9 to the intersection of US Hwy. 231, south along US Hwy. 231 to the intersection of AL Hwy. 14, west along AL Hwy. 14 to the east bank of the Coosa River, north along the east bank of the Coosa River to Lake Jordan, back to the Coosa County/Elmore County line); **GENEVA; HENRY; MACON** (that area inside the following boundaries: from County Road 24 at the Lee County line, west and south to County Road 26, west to County Road 10, southeast to County Road 5, south to County Road 47, south to County Road 2, east to the Russell County line); **MARENGO; MONROE; PICKENS** (north of US Hwy. 82); **TALLAPOOSA**; and **WILCOX** counties. Individual property owners in **CHAMBERS** and **COOSA** counties may hunt with dogs on their own property without special permit. No dog deer hunting allowed on Open Permit-Public Land (see 220-2-.85).

2. By Stalk Hunting Only (No Dogs): BIBB; PERRY: (that area inside the following boundaries: east of AL Hwy. 219, south of US Hwy. 82 and north of AL Hwy. 183); **BUTLER** (that area south of AL Hwy. 106 and east of I-65); **CHEROKEE; CHILTON; CLEBURNE; COFFEE** (that area inside the following boundaries: AL Hwy. 134 from the Covington County Line, east to County Road 460, south to the Geneva County line, east to the Dale County line, north to AL Hwy. 134, west to AL Hwy. 87, north to US Hwy. 84, west to AL Hwy. 189, south to AL Hwy. 141, north to US Hwy. 84, west to the Covington County line); **CRENSHAW** (north of AL Hwy. 10 and that area inside the following boundaries: from the east city limit of Luverne, US Hwy. 29 east to the junction of County Road 57, County Road 57 south to the junction of Davis Road, Davis Road west to County Road 41, County Road 41 south to US Hwy. 331, US Hwy. 331 north to County Road 41, County Road 41 north to County Road 39, County Road 39 north to the Luverne city limit); **DALE** (that area inside the following boundaries: Judy Creek south to Dale County Road 36, east to AL Hwy. 27, north to the Henry County line, north to the Barbour County line, west to Judy Creek); **DEKALB; ELMORE** (that area inside the following boundaries: east of US Hwy. 231, south of AL Hwy. 14, west of Tumkeehatchee Creek and north of the Tallapoosa River); **FAYETTE** (that area inside the following boundaries: west of US Hwy 43 and north of AL Hwy. 18); **FRANKLIN; HALE** and **PERRY:** (that area inside the following boundaries: from Hale

County Road 32 at the Hale County Line, west to the intersection of AL Hwy. 25, AL Hwy. 25 north until it intersects with the Talladega National Forest boundary, following the boundary south until it intersects the Perry County line, following the National Forest boundary east to Perry County Road 23, south to the intersection of Perry County Road 29, south to the Spring Hill Church Road, Spring Hill Church Road west to the junction of Perry County Road 23 and AL Hwy. 14, west to the Hale County line); **GREENE; PICKENS and TUSCALOOSA:** (that area inside the following boundaries: in Pickens County from the intersection of US Hwy. 82 and County Road 63, south on County Road 63 to Benevola, County Road 2 (commonly known as the Romulus Road) east through Greene County to US Hwy. 82 in Tuscaloosa County); **HOUSTON; JACKSON; LAMAR; LAUDERDALE; LAWRENCE; LIMESTONE; MADISON; MARION; MARSHALL; MORGAN; RANDOLPH; TUSCALOOSA** (that area north of US Hwy. 82); and **WINSTON** (that area east of AL Hwy. 5 from the Walker County line to Natural Bridge and all that area north of US Hwy. 278).

U.S. Corp Of Engineers Lands:

On U.S. Army Corp of Engineers (USACE) Lands in Alabama, the special muzzleloader, air rifle, and unantlered deer seasons are allowed the same as privately owned or leased lands in those counties, if USACE does not further restrict. Be aware to consult USACE regulations regarding hunting activities and boat ramp use prior to hunting USACE regulated areas. Special Permits from the USACE may be required and some USACE areas are closed to hunting. For complete information concerning hunting on USACE lands, visit the USACE Mobile District website at the following:

<https://www.sam.usace.army.mil/Missions/Civil-Works/Recreation/Hunting/>.

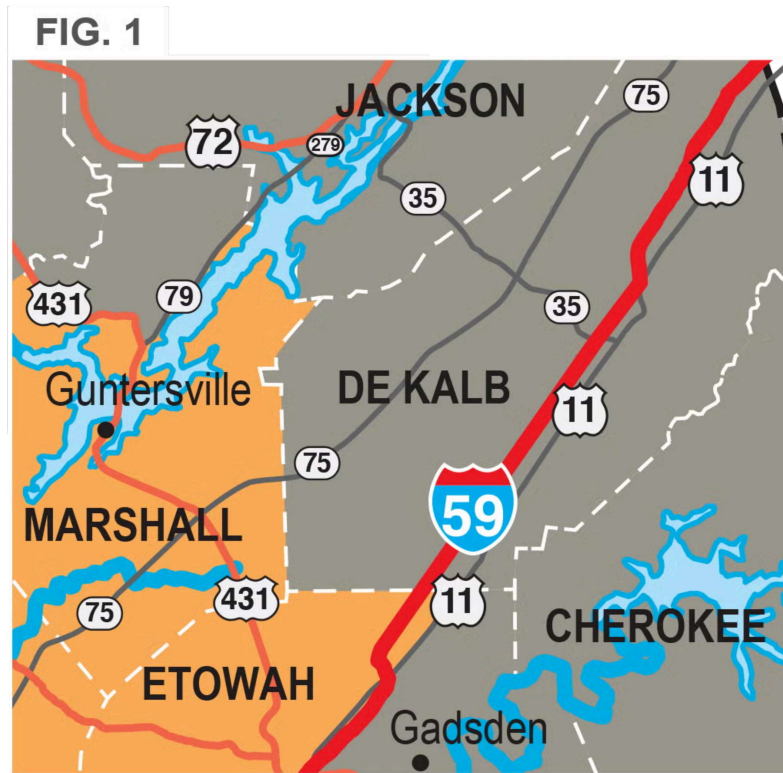
U. S. Forest Service (USFS):

1. **STALK HUNTING** – No Dogs (same season dates as open permit for county) except Wildlife Management Areas – one deer per day.
2. **DOG DEER HUNTING** – No Dogs, except for USFS Lands within Calhoun, Clay, and Talladega counties during the Dog Deer Season on open permit-public lands – on Thursdays and Fridays until 2:00 p.m.; on weekends during legal shooting hours. No dog deer hunting on Monday, Tuesday, or Wednesday of each week unless Christmas Day or New Year's Day falls on a Monday, Tuesday, or Wednesday. No other state or federal holidays are included in this exception. One deer per day.

3. **NO DOG DEER HUNTING ON THE PINEY WOODS/IVORY MOUNTAIN AREA** – The borders of which are defined as follows: bounded by the Cleburne County line to the north running east and west, then to the west by Clay County Road 3 running south to State Route 49; The south border is Clay County Road 66 running east and west from State Route 49 to Hwy 9; The eastern border is Hwy 9 running north from Clay County Road 66 to the Cleburne County line.
 4. **Abandonment of any personal property on National Forest Service Lands** (tree stands, hunting blinds, hunting equipment, pets, livestock, pen-raised quail, or other animals) is PROHIBITED. The prohibition (CFR 36. II. 261.10 e) will be enforced by USDA law enforcement personnel.
 5. **Chronic Wasting Disease Management Zone (CMZ):** During Deer Gun Season on privately owned or leased land only, two unantlered deer may be taken per day. This does not apply to Wildlife Management Areas, Community Hunting Areas, and open permit public lands located within the CMZ.
-

SPECIAL YOUTH (under 16) DEER HUNTING Statewide, (includes all Privately Owned, Leased Lands and Open Permit – Public Lands (except Wildlife Management Areas). The same legal arms and ammunition apply as in Deer season, in accordance with Rule 220-2-.119

ADDITIONAL ZONE MAPS



Detailed area of Zone A and C in DeKalb, Etowah, and Jackson, and Marshall Counties.



Zone B Eastern Boarder Detailed Map.



Zone E is in two locations in East Alabama.

ADDITIONAL LINKS

[Deer Hunting in Alabama](#)

[Game Check and Harvest Record Information](#)

[License Information](#)

[Purchase Your License Online](#)